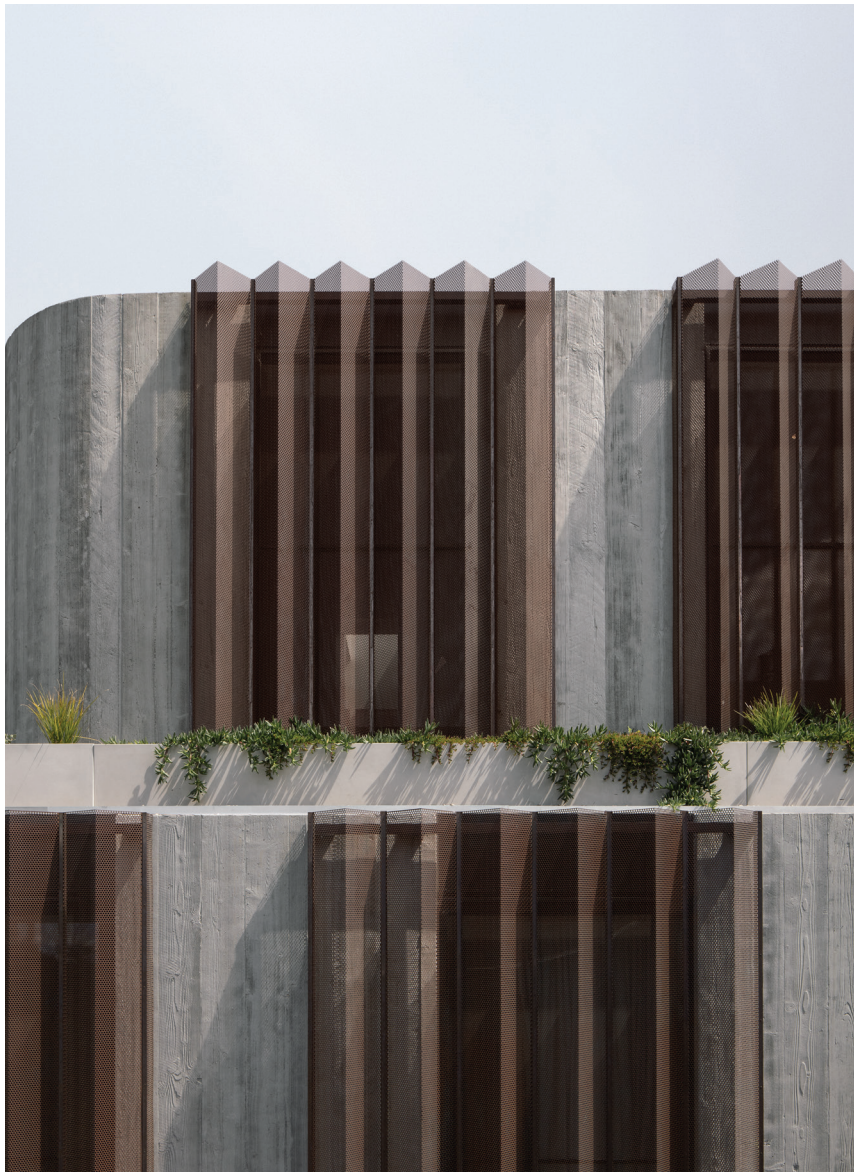


# design anthology

INTERIORS / ART / ARCHITECTURE / TRAVEL



AUSTRALIA EDITION / ISSUE 05

HOME / SYDNEY

# Living Well



When the owners of this single-storey brick house in Sydney's Upper North Shore engaged architecture firm Studio Prineas to redesign their home, the brief was as much about form and function as it was about the intangible quality of feeling. The couple, who lived in the Netherlands before moving to Sydney, have a great appreciation for design and architecture, and had amassed a collection of fine art and treasured pieces from around the world.

Charmed by the concept of *gezellig*, the Dutch word for a sensation of shared cosiness, conviviality and wellbeing, they wanted a home that would reflect this philosophy. 'Achieving this feeling was key to the overall brief and design outcome of the project,' says Eva-Marie Prineas, principal of Studio Prineas. This involved taking inspiration from the original character and existing materials and features of the 1980s house, as well as from the architecture of prolific American modernists Craig Ellwood and Pierre Koenig.

In the spirit of mid-century design, Prineas and her team applied walnut veneer to doors and joinery, and created custom built-in furniture for ease and comfort. Loose pieces from Scandinavian designers like Louis Poulsen, Hans Olsen, Jan Wickelgren and Sigurd Resell further enhance the modernist look and feel. 'The tone and features of the original home, such as the low-profile roof form, beautiful lofty ceiling and brick chimney structures, are reminiscent of the mid-century era, and we sought to continue that language,' Prineas explains. This is further

articulated with newly added breezeblocks, which act as external courtyard screens, and travertine flooring throughout.

The entry is accessed via a side pathway, leading into the living room at the centre of the house. The bedrooms and bathrooms are at the front, while the kitchen, living and dining spaces are to the rear. In the living room, a heavy stone fireplace reaches up through a skylight that filters light into the space. Passive design principles were a consideration throughout, especially with the design of pocket courtyards for good cross ventilation and immediate access to the outdoors, and the considered positioning of clerestory and dormer windows to maximise natural light.

The joinery is specially designed to accommodate the owners' art and objets: Dutch Delftware collectibles and Fiesta dinnerware are displayed on the kitchen island and shelves, evening drinks are mixed on the custom martini bar, and the couple's much-loved Paul Ryan painting is displayed in a purpose-built recess in the wall.

'We loved working with the clients to create this home. Our design meetings became longer and longer as time went on, as did site meetings with the builder, who was also incredibly passionate about creating the perfect forever home for our clients,' Prineas says. 'There was a wonderful feeling of sharing and togetherness throughout the entire process that is echoed in the comfort, ease and joy of the final result. It's moments like these that truly embody a sense of *gezellig*.'

*Text*  
Rebecca Gross

*Images*  
Felix Forest

*Styling*  
Anna Delprat

*Previous Page*  
Studio Prineas updated this 1980s house in Sydney's Upper North Shore with modernist accents. The new concrete gate and breezeblocks are juxtaposed against the original single-storey brick structure with retro signage on the facade

*Facing page*  
The couple has a love for mid-century architecture and design, and their living room reflects this, with classics like a Louis Poulsen PH5 pendant, Ligne Roset dining table and Series 7 chairs by Arne Jacobsen for Fritz Hansen





This page  
 The home's entrance is between the living area on the right and an enclosed courtyard adjacent to the main bedroom. Here, bench seats were installed along the path to catch the northern sun

Facing page  
 In the entrance, custom built-in furniture in walnut veneer evokes a mid-century feel. The Dipping light by Jordi Canudas for Marset and set of Bender wall hooks by NEUVONFRISCH are playful touches



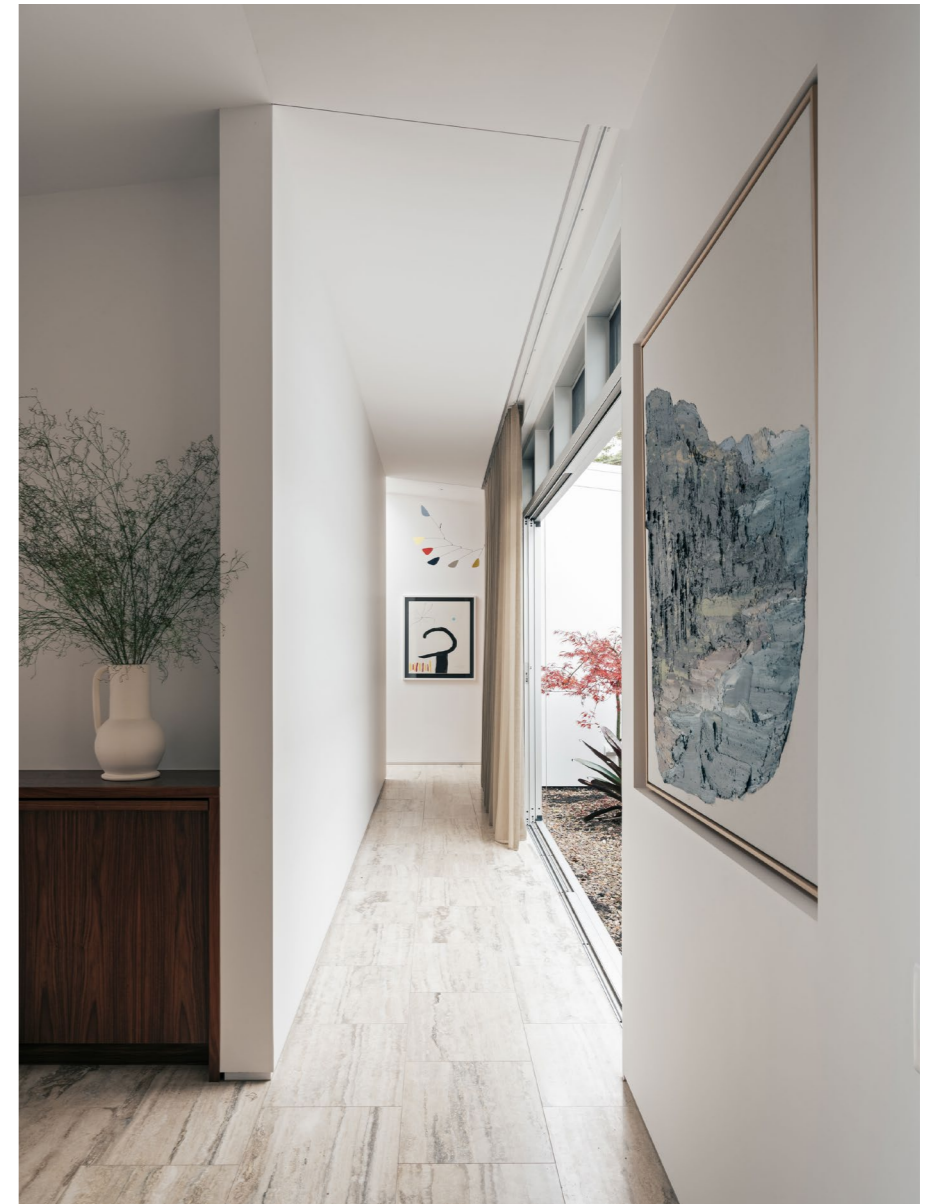


This page, top left  
Dormer and clerestory windows create shafts of light throughout the home. The pocket courtyard brings light and nature into the transitional passage at the centre of the home, while the concrete breezeblocks are a practical screening device

This page, top right  
The stone fireplace structure divides the entry from the living area

This page, bottom  
A skylight runs the length of the travertine-lined hallway and integrated study nook

Facing page  
The gallery passageway accommodates pieces from the owners' art collection, including an Alexander Calder mobile and a Paul Ryan painting, which is displayed in a purpose-built recess





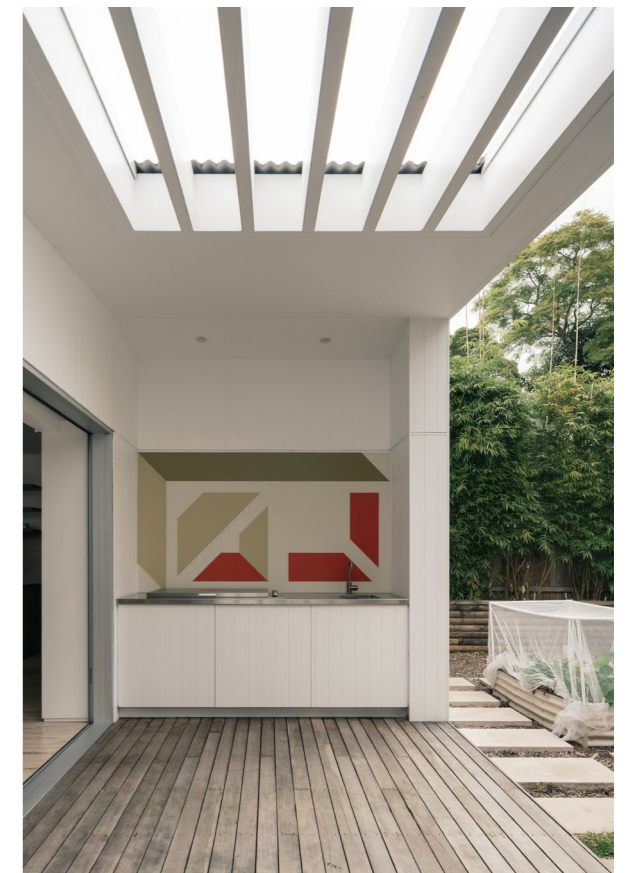
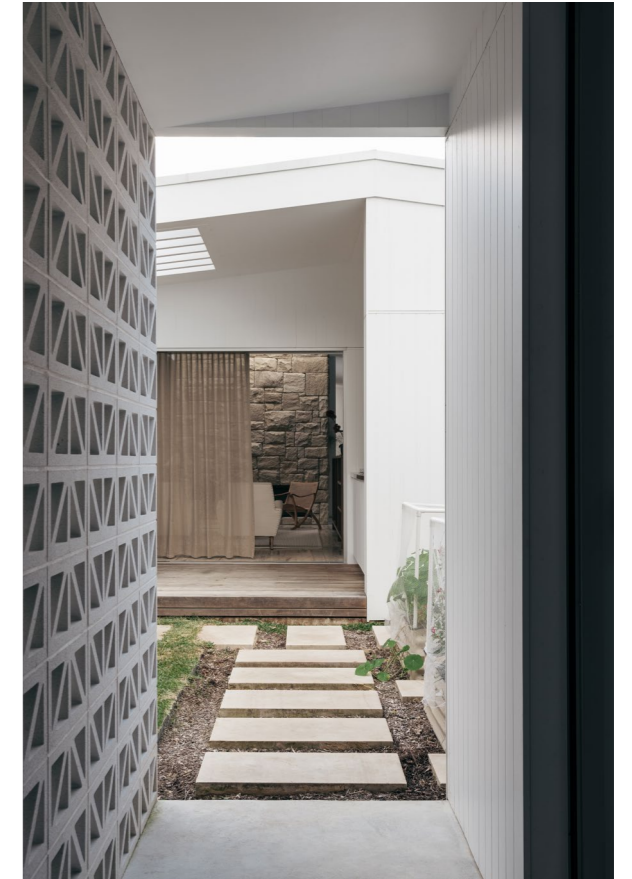
This page, top  
Against the stainless steel splashback in the kitchen, custom shelves hold a collection of Delftware collectibles and Fiesta crockery. A mini version of Louis Poulsen's PH5 pendant hangs above

This page, bottom and facing page  
In the dining area, two Tracey Emin artworks hang over the custom martini bar, while oversized windows create a beautiful play of light and shadow. Sliding glass doors open out to the deck, garden and studio





The living room is oriented around the central stone fireplace and is characterised by earthy colours and organic materials in mid-century pieces like the rare 1960s Norwegian rattan folding chair by Sigurd Resell for VATNE Møbler, Jan Wickelgren-designed floor lamp and Paul Kafka sofa



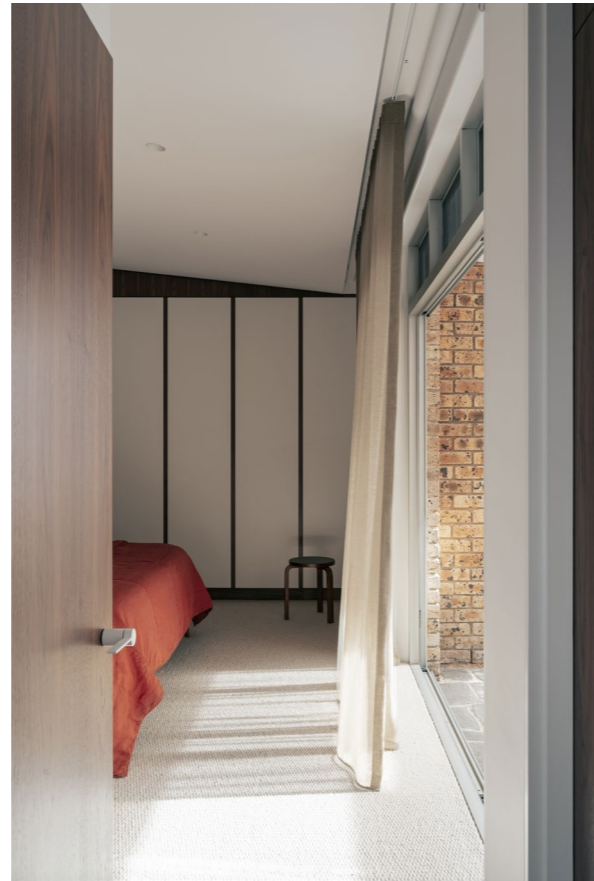
Facing page  
Full-height sliding doors connect the interiors to the outdoor area, complete with herb garden and vegetable patch

This page, top left  
The home's communal spaces are designed for a sense of cosiness, conviviality and wellbeing

This page, top right  
The house is accessed by a side pathway, where the low-profile roof and breezeblocks set the modernist tone

This page, bottom  
The designers and clients collaborated on this hand-painted mural at the rear timber deck. The image represents an abstracted breezeblock





This page, left  
The walls of the master ensuite are clad in glossy white finger tiles, while the bathtub is inset in travertine slabs to match the floor

This page, right  
In the master bedroom, wardrobes have been designed with an expressed timber frame and white infill to create the illusion of wall panelling. The room opens up directly onto a pocket courtyard

Facing page  
A full-height walnut veneer unit runs along the back wall of the master bedroom, with integrated shelving displaying collectibles like an Alexander Calder mobile, purchased from the MoMA Design Store in New York. Incorporated into the cabinetry unit is a bedhead upholstered in green Kvadrat fabric, its hue echoed in another Dipping light and complemented by tangerine linen