

THE BIG REVEAL
MEET THE FINALISTS IN
IDA 2022

99+ pages of
SUBLIME INSPIRATION



COAST WATCH

Rooms with a blue view



VINTAGE MEETS
LUXURY

At work with TAMSIN JOHNSON

belle

FANULI INTERIOR DESIGN AWARDS

*Congratulations to the
outstanding finalists in this
year's Belle Fanuli Interior
Design Awards.*

SPONSORED BY

FANULI
SIGNORINO
Winning
appliances

LIVE WITH
ILVE *Fhiaba*

VOYAGER ESTATE
MARGARET RIVER

IN PARTNERSHIP with leading furniture and design brand Fanuli, *Belle* is delighted to announce the finalists in this year's Interior Design Awards. Now in its twelfth year, this prestigious program recognises excellence in Australian interior design and decoration. Winning designers and their work will be published in *Belle's* December/January 2022/23 issue on sale November 21, 2022. We are grateful for the support of all of our sponsors and to all the exceptionally talented entrants. This year's program attracted the most entries ever received in the history of the awards. For a look at the finalists and their inspirational work, turn to page 37.



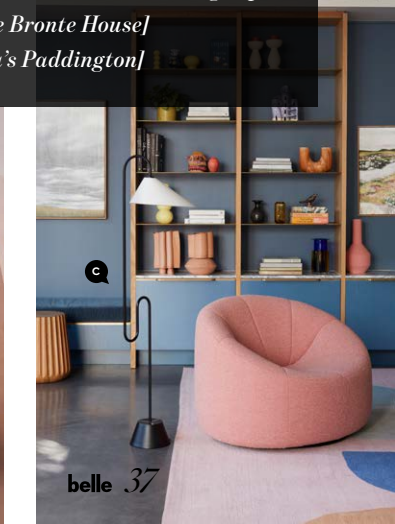
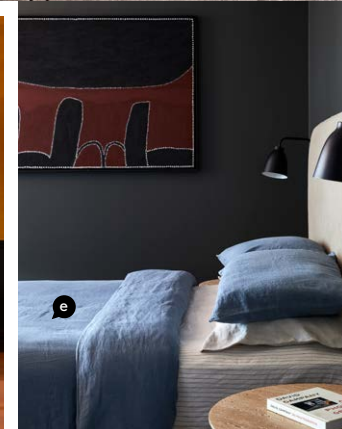
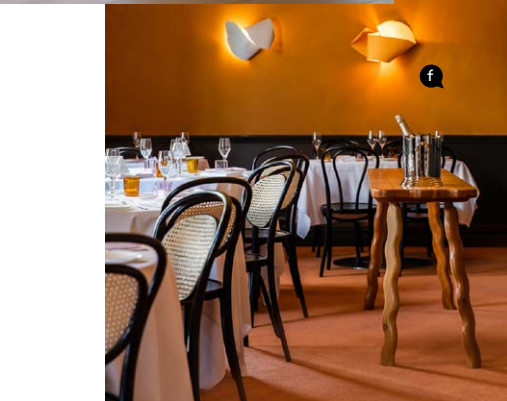
The Finalists
INTERIOR DESIGNER OF THE YEAR

FLACK STUDIO [a *Ace Hotel*]
 ALEXANDER & CO. [b *Pacific House*]
 ARENT&PYKE [c *Layer Cake*]
 GREG NATALE [d *Toorak Penthouse*]
 HANDELSMANN + KHAW [e *Paddington Regency House*]

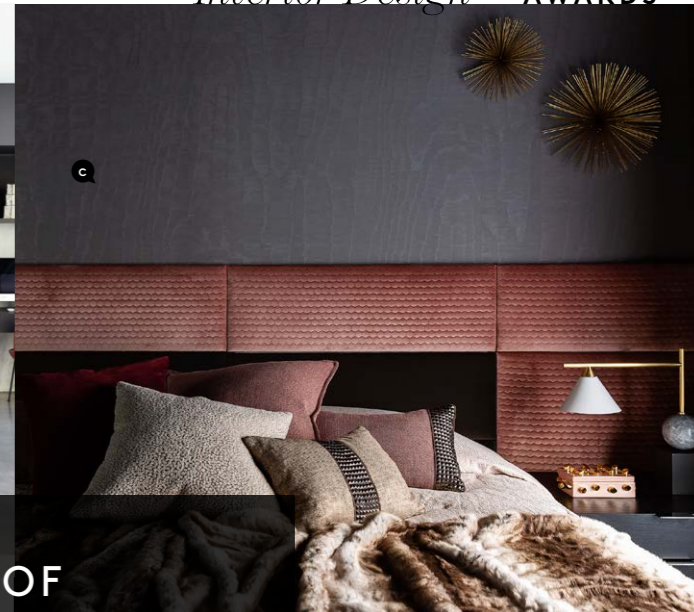


The Finalists
EMERGING DESIGN STAR

JACKET CURATED AND MOLNAR ARCHITECTS [a *Kent Road*]
 CARLA BARTON DESIGN STUDIO [b *Queen Residences*]
 ALTUS DESIGN STUDIO [c *Trafalgar Triple Treat*]
 ALEX MORRISON INTERIORS [d *Autore Moda Flagship*]
 JILLIAN DINKEL DESIGNS [e *Bronte House*]
 BRAHMAN PERERA [f *Ursula's Paddington*]

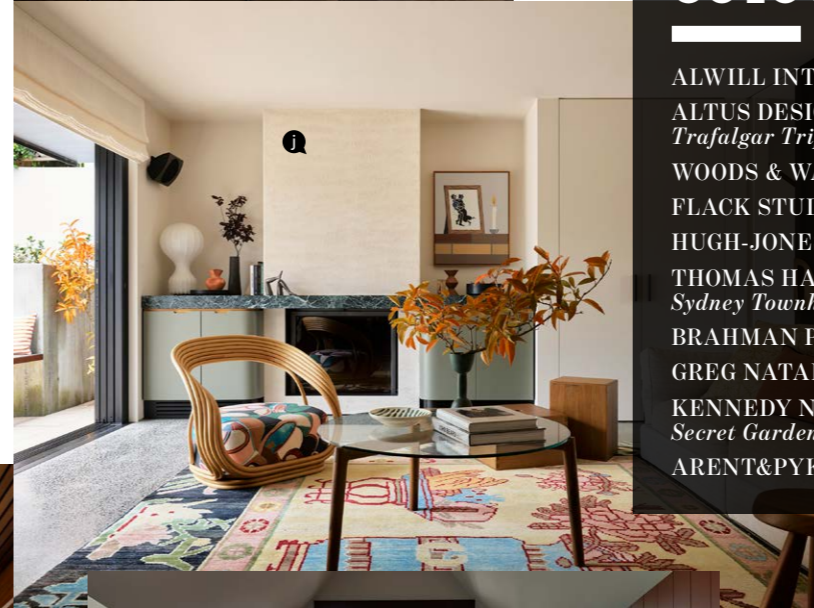
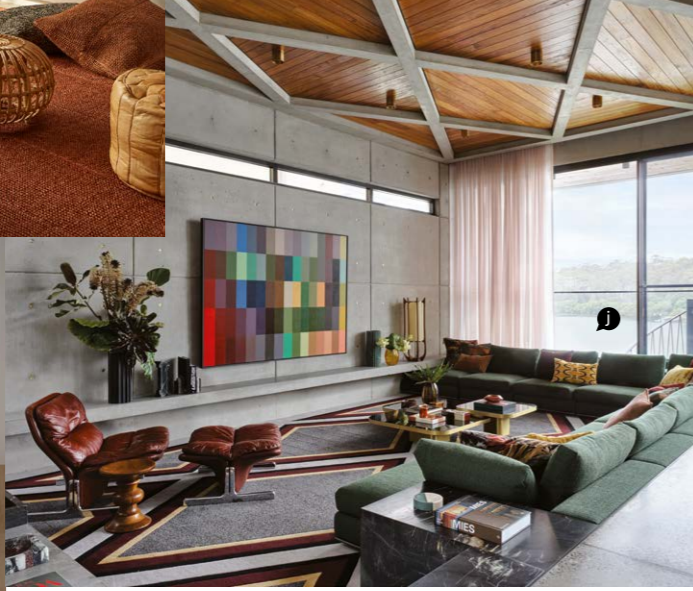


PHOTOGRAPHY: ANSON SMART [a *Ace Hotel*], LAYER CAKE [b *Pacific House*], PACIFIC HOUSE [c *Layer Cake*], PADDINGTON REGENCY HOUSE [d *Toorak Penthouse*], NIKKI TO [e *Bronte House*], PABLO VEIGA [f *Ursula's Paddington*], TRIPLE TREAT, DAVE WHEELER [Kent Road], QUEEN RESIDENCES, AUTORE MODA FLAGSHIP



The Finalists
BEST USE OF COLOUR

- ALWILL INTERIORS *Family Heritage [a]*
- ALTUS DESIGN STUDIO *Trafalgar Triple Treat [b]*
- WOODS & WARNER *Brougham Residence [c]*
- FLACK STUDIO *Elwood Residence [d]*
- HUGH-JONES MACKINTOSH *Playa House [e]*
- THOMAS HAMEL & ASSOCIATES *Sydney Townhouse [f]*
- BRAHMAN PERERA *Ursula's Paddington [g]*
- GREG NATALE *Bondi Apartment [h]*
- KENNEDY NOLAN ARCHITECTS *Secret Garden House [i]*
- ARENT&PYKE *Legato House [j]*

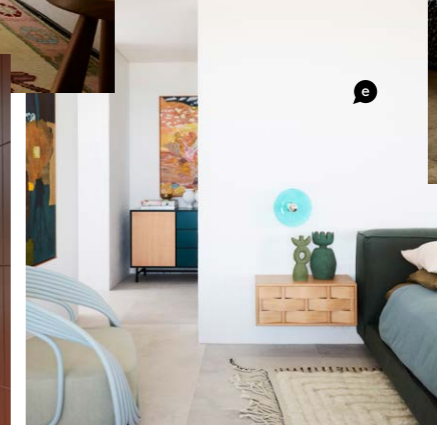
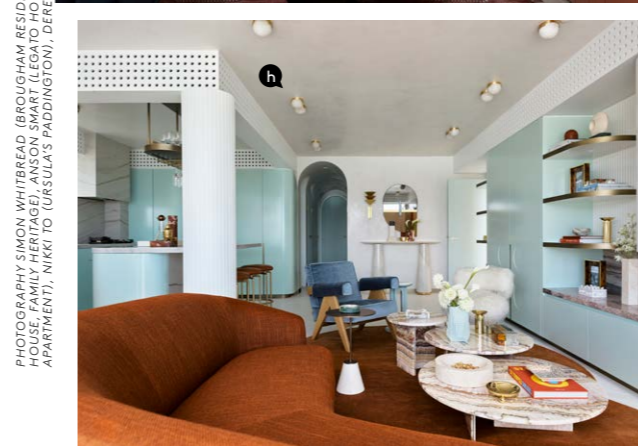


The Finalists
RESIDENTIAL INTERIOR

- BRAHMAN PERERA *Terra House [a]*
- ANNA.CARIN DESIGN STUDIO *The Bakery [b]*
- HANDELSMANN + KHAW *Wilkinson Villa [c]*
- KENNEDY NOLAN ARCHITECTS *Always [d]*
- ARENT&PYKE *Layer Cake [e]*
- THOMAS HAMEL & ASSOCIATES *Sydney Townhouse [f]*
- HUGH-JONES MACKINTOSH *Playa House [g]*
- FLACK STUDIO *Middle Park Residence [h]*
- BRAD SWARTZ ARCHITECTS AND HENRY WILSON *Laneway Glass House [i]*
- GREG NATALE *Kyle Bay [j]*



PHOTOGRAPHY JUSTIN ALEXANDER (THE BAKERY), KATHERINE LU AND TOM FERGUSON (LANEWAY GLASS HOUSE), ANSON SMART (LAYER CAKE, SYDNEY TOWNHOUSE, MIDDLE PARK RESIDENCE, KYLE BAY), LILLIE THOMPSON (TERRA HOUSE), FELIX FOREST (WILKINSON VILLA), PRUE RUSCOE (PLAYA HOUSE), DEREK SWALWELL (ALWAYS HOUSE)



VOTE NOW TO WIN!

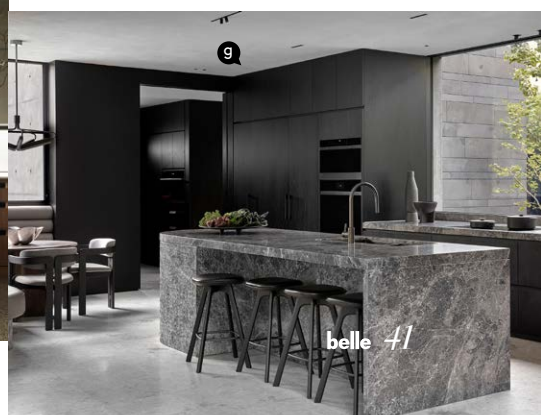
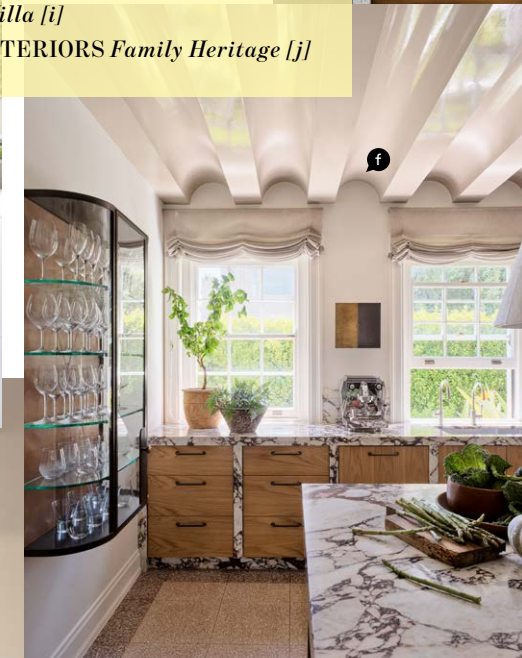
SELECT YOUR FAVOURITE RESIDENTIAL INTERIOR FOR THE CHANCE TO RECEIVE A MODA PIERA 'ARANCINI' FLOOR LAMP FROM FANULI, VALUED AT \$1995. VISIT: HOMESTOLOVE.COM.AU/READERSCHOICE2022





The Finalists
BEST KITCHEN

ALEXANDER & CO. *Pacific House [a]*
 MADELEINE BLANCHFIELD *Bronte House II [b]*
 LUKE FRY ARCHITECTURE & INTERIOR DESIGN *Glen Iris House [c]*
 GREG NATALE *Mosman House [d]*
 STUDIO KATE *Yarranabbe House [e]*
 FLACK STUDIO *Elwood Residence [f]*
 MIM DESIGN *Park House [g]*
 ESOTERIKO *Light Take/Bunker in the Trees [h]*
 HANDELSMANN + KHAW *Wilkinson Villa [i]*
 ALWILL INTERIORS *Family Heritage [j]*



PHOTOGRAPHY ANSON SMART (PACIFIC HOUSE, ELWOOD RESIDENCE, MOSMAN HOUSE), PRUE RUSCOE (FAMILY HERITAGE), FELIX FOREST (WILKINSON VILLA), WAREE HOMER (YARRANABBE HOUSE), DAVE WHEELER (BRONTE HOUSE II, LIGHT TAKE/BUNKER IN THE TREES), SEAN FENNESSY (PARK HOUSE), TIMOTHY KAYE (GLEN IRIS HOUSE)



The Finalists
BEST BATHROOM

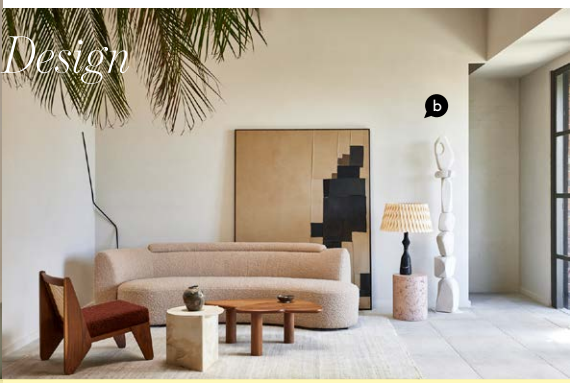
- ANNA.CARIN DESIGN STUDIO *The Bakery* [a]
- ROB MILLS ARCHITECTURE & INTERIORS *The Penthouse at Thirty Anderson* [b]
- DECUS *Beethoven on the Bay* [c]
- CARLA BARTON DESIGN STUDIO *Queen Residences* [d]
- STUDIO KATE *Yarranabbe House* [e]
- HANDELSMANN + KHAW *Wilkinson Villa* [f]
- FLACK STUDIO *Elwood Residence* [g]
- POCO DESIGNS *Double Bay Apartment* [h]
- CAROLE WHITING *Gable House* [i]
- GREG NATALE *Ashfield House* [j]



PHOTOGRAPHY JUSTIN ALEXANDER (THE BAKERY), DAVE WHEELER (BEETHOVEN ON THE BAY, QUEEN RESIDENCES), ANSON SMART (ELWOOD RESIDENCE, ASHFIELD HOUSE, DOUBLE BAY APARTMENT), FELIX FOREST (WILKINSON VILLA), TIMOTHY KAYE (THE PENTHOUSE AT THIRTY ANDERSON), RHIANNON TAYLOR (GABLE HOUSE), MAREE HOMER (YARRANABBE HOUSE)



a



b



c



d

The Finalists
COMMERCIAL INTERIOR

ALEXANDER & CO. *LO&CO* [a]
 DANIEL BODDAM STUDIO *Wyer & Co* [b]
 BRAHMAN PERERA *Henne* [c]
 ESOTERIKO *Rachel Gilbert* [d]
 STUDIO TATE *Relinque* [e]
 ALEX MORRISON INTERIORS *Autore Moda Flagship* [f]
 BIASOL STUDIO *Insight Body and Mind* [g]
 STUDIO PRINEAS *Sheeth Headquarters* [h]
 SJB *Yirranma Place* [i]



i



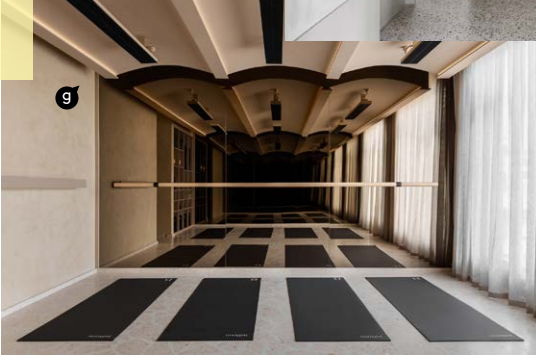
h



f

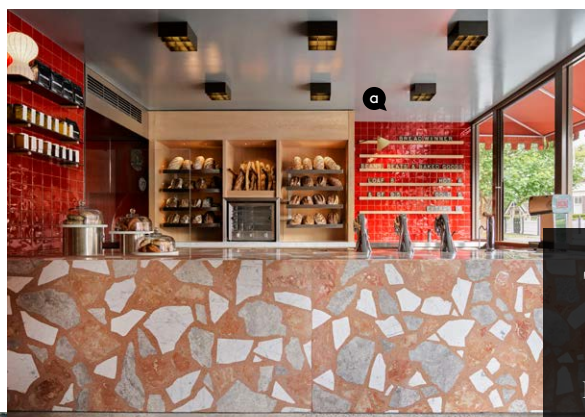


e

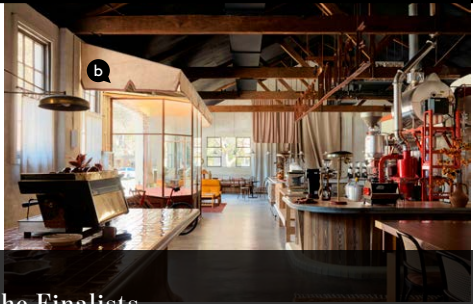


g

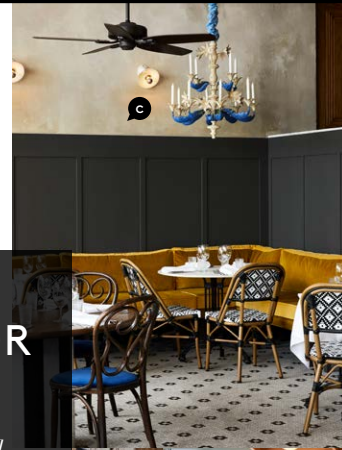
PHOTOGRAPHY DAVE WHEELER (AUTORE MODA FLAGSHIP, RACHEL GILBERT), ANSON SMART (LO&CO, YIRRANMA PLACE, GENOVESE COFFEE HOUSE, ACE HOTEL SYDNEY, BREADWINNER), TIMOTHY KAYE (INSIGHT BODY AND MIND), LILLIE THOMPSON (HENNE, RELINQUE, ENTRECÔTE PRAHRAN), PABLO VEIGA (WYER & CO), GAVIN GREEN (SHEETH HEADQUARTERS), ALAN JENSEN (OSBORN HOUSE), TOM FERGUSON (ARTURO'S), SEAN FENNESSY AND TOM BLACHFORD (SOCIETY).



a



b



c

The Finalists
HOSPITALITY INTERIOR

FLACK STUDIO *Breadwinner* [a]
 ALEXANDER & CO. *Genovese Coffee House* [b]
 BRAHMAN PERERA *Entrecôte Prahran* [c]
 FLACK STUDIO *Ace Hotel Sydney* [d]
 RUSSELL & GEORGE *Society* [e]
 LUCHETTI KRELLE *Arturo's* [f]
 MAC DESIGN STUDIO IN COLLABORATION WITH LINDA BORONKAY DESIGN STUDIO *Osborn House* [g]



g



f



e



d