

ELLE DECORATION

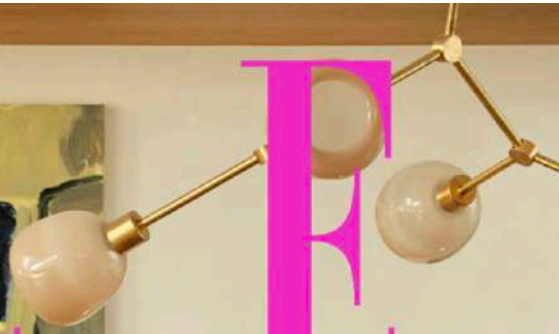
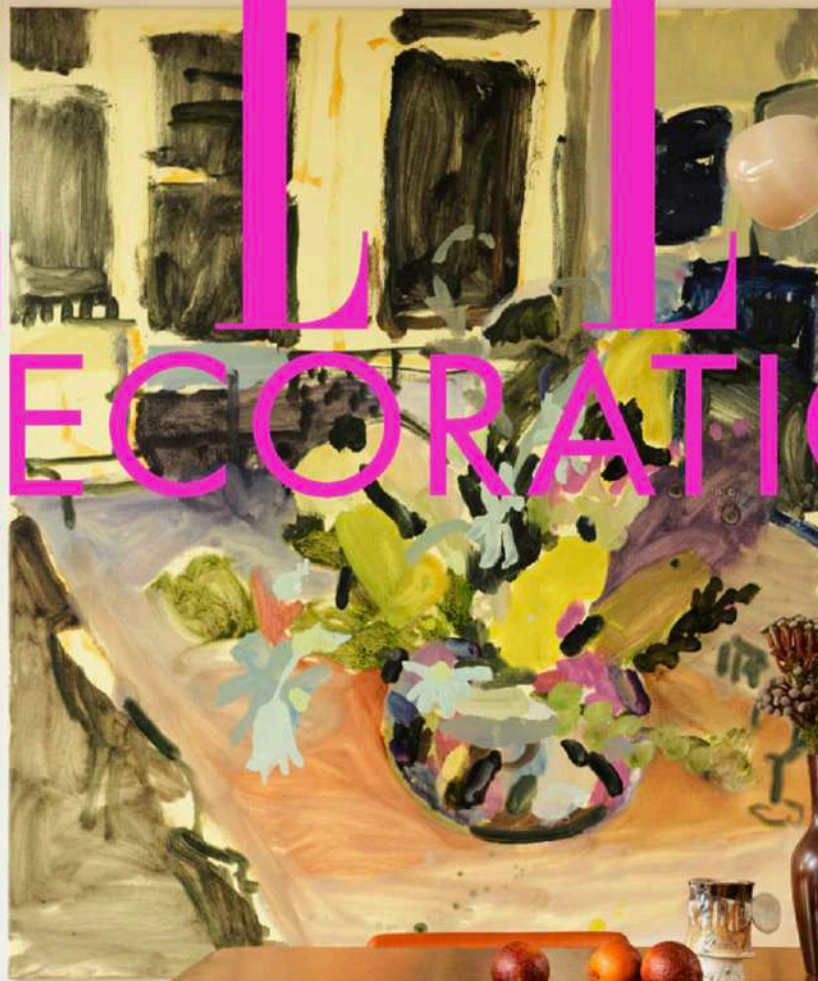
MAY 2024

MALIBU ZEN
THE CALI-COOL
COLOURS
MAKING PALE
INTERESTING

**POWER OF
THE PORTAL**
HOW TO ADD
DRAMA TO
DOORWAYS

**YOUTH
IN REVOLT**

REBELLIOUS
IDEAS FOR
CREATIVE
KIDS' ROOMS



NEXT BIG THINGS

FUTURE-SHAPING FURNITURE FROM MILAN DESIGN WEEK AND BEYOND



Sensitive soul

In a Sydney conservation area, Studio Prineas's stealthy update to a charming 1930s cottage offers sustainability with a touch of zen

WORDS VICTORIA WOODCOCK
PHOTOGRAPHY ANSON SMART
STYLING CLARE DELMAR

Exterior Views of the established garden – and its pretty violet-blooming jacaranda tree – are integral to the shingle-clad, two-storey extension. The outdoor 'Adlis' dining table is by Justin Hutchinson for Kett, surrounded by Nollia 3651* chairs by CMP Design for Pestaal. ▶



Tricky problems' seem to be a recurring theme for Eva-Marie Prineas. She's not complaining, though. 'The trickier the project, the more exciting, because opportunities unfold as we work,' she says. 'We often end up with unexpected resolutions, which can be a delightful surprise.'

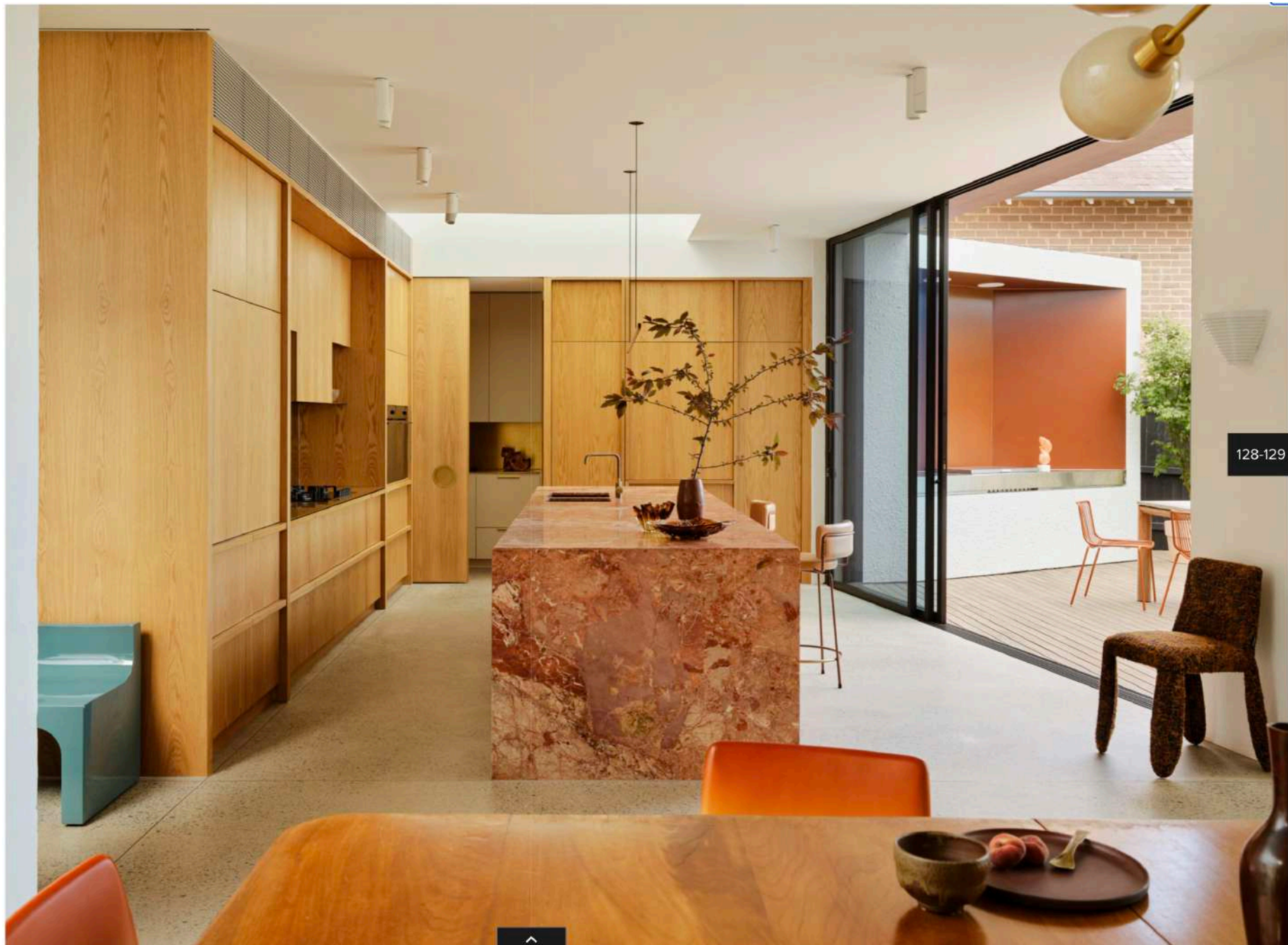
A sense of the unexpected certainly prevails at Alpha House, the 1930s cottage in a Sydney conservation area recently renovated by Studio Prineas. From the front, the single-storey brick building retains its Federation-style charm and shapely terracotta-tiled roof, inspired in part by British Edwardian architecture. At the back, however, a soaring two-storey extension is playfully clad in white-painted wooden shingles. It's different, yet not out of place.

'The brief was to create a family home that maximised natural light and vistas to the garden,' says Eva-Marie. A front-of-house 'kids' zone', with bedrooms for the family's children and a dedicated lounge, retains the building's pretty original features, while the new double-height living space is bright, breezy and intended to visually bring the outside in. As well as vast sliding doors and pivoting windows, skylights capture views of a towering jacaranda tree. 'It's as beautiful in winter, when it's skeletal and sculptural, as when it's blooming in spring and summer,' she adds.

Every part of the design was closely considered, including the environmental impact of its renovation. As much of the original build as possible was retained – including a garage reimagined as a poolhouse – while solar panels were added and water tanks placed in the garden. Increasingly, this mindset (and the studio's recent B-Corporation status) is as appealing to clients as the studio's part-Zen-minimalist, part-beachy-cool aesthetic. studioprineas.com.au

Living room Designed to bring the outside in, the airy, garden-view space is centred around the modular Edra 'Standard' sofa by Francesco Bontariné. To the far right, the curvy 'Wave' chair by Daniel Boddam sits next to a B&B Italia leather-topped 'Hive' footstool; in the foreground is a pair of 'Gomito' chairs by Vorma. In the centre, the De La Espada marble and walnut 'Twenty-Five' coffee table is placed upon a hand-knotted 'Agra' rug in 'Duchess' by Armadillo. The lounge seen on the patio outside is the 'Thinking Man's Chair' by Jasper Morrison for Cappellini ▶

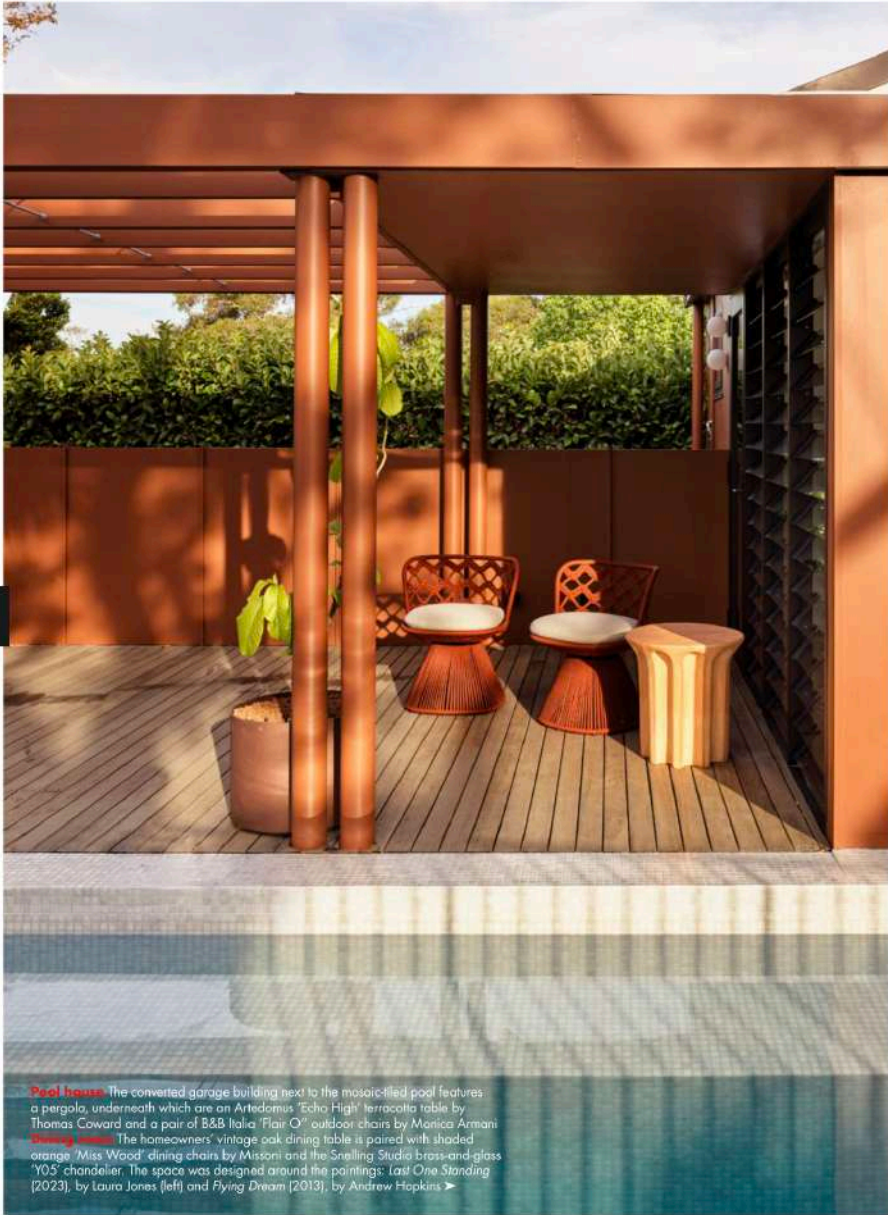
Kitchen The open-plan space combines Tasmanian oak-veneered cabinetry and Italian Tiberio marble with a brass worktop and splashback, designed to patinate over time. At the island, the 'Diiva' swivel stools are by Grazia & Co, while to the left of the space is a turquoise lacquered polimex 'Dharma' armchair by Studipepe for Baxter, and to the right is a Moooi 'Monster' chair by Marcel Wanders ▶



< 124-125

128-129 >





Pool house The converted garage building next to the mosaic-tiled pool features a pergola, underneath which are an Artedamus 'Echo High' terracotta table by Thomas Coward and a pair of B&B Italia 'Flair O' outdoor chairs by Monica Armani. **Living room** The homeowners' vintage oak dining table is paired with shaded orange 'Miss Wood' dining chairs by Missoni and the Snelling Studio brass-and-glass 'YOS' chandelier. The space was designed around the paintings: *Last One Standing* (2023), by Laura Jones (left) and *Flying Dream* (2013), by Andrew Hopkins >



Children's living room Original features and kauri-pine floorboards are combined with the hand-knotted 'Agra' rug in 'Burnt Umber' by Armadillo, an ochre-hued 'Wilfred' sofa by Jardan and a Bordeaux-velvet 'Murena Chair S2' by Maria Sala Editions. The ceiling light is the 'Dot 01 Atomium Pendant' from Lambert & Fils and the floor lamp is the 'Parliament' by Le Corbusier for Nemo. In the foreground is a glazed stoneware 'Willa' stool by La Manufacture, while the two side tables are &Tradition's lacquered 'Tung' design (on the left) and Studio Raw Material's marble 'Sienna Plateau'. Above the fireplace, the large painting is *Penumbra XI* by Nancy Constandelia; the small painting is *Study* by Jo Nolan; and above the sofa is *Aftermath* by Marisa Purcell



< 128-129



Study A pair of Acerbis 'Jot' chairs, designed by Giotto Stoppino in 1976, are paired with a bespoke desk and the 'Bidjar Kindle' wool rug, crafted in Jaipur, from The Rug Establishment. The wall light is Le Corbusier's 'Lampe De Marseille Mini' from Nemo and the painting is *Elysium* (1993) by Emily Harrison >



132-133 >



< 130-131



Ensuite bathroom This space brings together Tasmanian oak-veneer cabinetry and Italian Tiberio pink marble with ABI Interiors' 'Celine' basin and Astra Walker's 'Icon' tap in English brass. At the adjoining bespoke oak dressing table there's a 'Cave' stool by Manetti x Interno Italiano

Main bedroom This 'golden cocoon' of a room is cosseted in Bremworth's loop-pile, felted New Zealand wool 'Gale' carpet in 'Sienna'. The wall of warm-toned Tasmanian oak-veneer panelling and caramel linen bedcover, by In Bed, is offset with a Moooi 'Monster' chair by Marcel Wanders and the classic Le Corbusier 'Lampe De Marseille Mini' wall light from Nemo

See Stockists page for details **ED**

134-135 >

