

WABISABI



2024 MAY / JUN

直向建築 | 有序生活製作所 | 日作空間設計+汗得建築工事實驗教育機構 | 僕人建築空間整合
ST design studio | 沈庭增建築師事務所 | 魏來真設計 | 九毛聯合建築工場
Studio Prineas | Taslab | Norm Architects | Snohetta



Residence / Fisherman's House

Studio Prineas



住宅 / 漁夫之家

主要設計 Eva-Marie Prineas
 攝影 Gavin Green
 整理 陳岱華

漁夫之家位於雪梨西部郊區伯奇格羅夫（Birchgrove）的陡峭斜坡上，這裡也是愛洋國（Eora Nation）的旺加爾族（Wangal）和比拉比里格爾族（Birrabirrigal）的土地，此建築俯瞰雪梨港，將一個19世紀的漁夫小屋與脫模混凝土相連，形成層次豐富的住宅。首先，建築設計工作室 Studio Prineas 保留這個原始珍貴且由擋風板製成的漁夫小屋，並引入具現代感的建築——一棟依著砂岩懸崖邊緣而建、不規則清水混凝土製成的「塔樓」。街道層面僅能看見該住宅的粗糙混凝土塔樓樓梯，形成一種低調、具吸引力的神秘感。

首席建築師 Eva-Marie Prineas 解釋：「塔樓的垂直設計巧妙地應對了地勢的陡降，並促成了一場穿越場地的體驗之旅。」在沉靜的混凝土質地中，動線被引導穿越樓梯間，其內飾以胡桃木飾面、柔和的吊燈以及特製的皮革包裹扶手。隨著人們向下移動，一系列令人嘆為觀止的視野逐漸揭開，塑造出具層次的氛圍。從景觀到引人注目的砂岩懸崖面，再透過量身定制的深綠色天鵝絨窗簾可以瞥見海港。經過修復

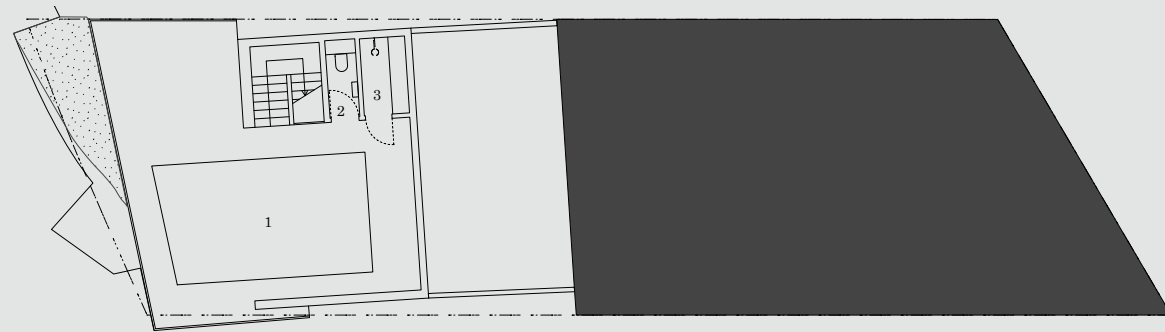
並開放成單一的面積，漁夫的小屋呈現了一個低調的、開放式的生活空間，逐漸呈現該地點吸引人的港口景觀。小屋原始牆的印記以黑色結構勾勒，這是建築物最初形式的空間記憶。尺寸適中的起居空間、餐廳與廚房向外開放至一個大甲板，供家庭聚會使用，而庭院為夏日午後提供了一個遮蔽的戶外休憩區。地下室和小型無邊際游泳池被巧妙隱藏在小屋下方，這是一個經周延思考而佈局成形的姿態，視覺上將港口景觀延伸回返主場。

整體而言，Studio Prineas 巧妙地將這棟稍顯狹小的房子，設計一個靈活、強化功能性、放大空間感並滿足家庭變化的需求。定製的皮革包裹滑動牆面，使其方便調整空間大小，而鏡面則創造出深度的錯覺。家具的選擇經過精心挑選，減去臥室中視覺的繁亂，而在主臥室中，堅固的石浴缸同時作為床頭板，增加了空間感。Studio Prineas 為了讓這個地點增加另一層的保護和修復，與 Bushy Landscapes 緊密合作，研究並尋找源自該地點的原生植物苗木，配以懸掛式的花園遍布建築面，並隨著時間的推移「恢復」這個地點。

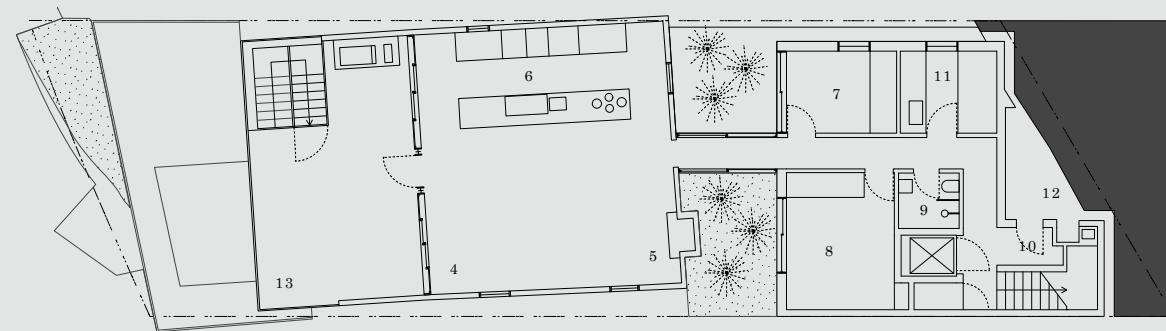




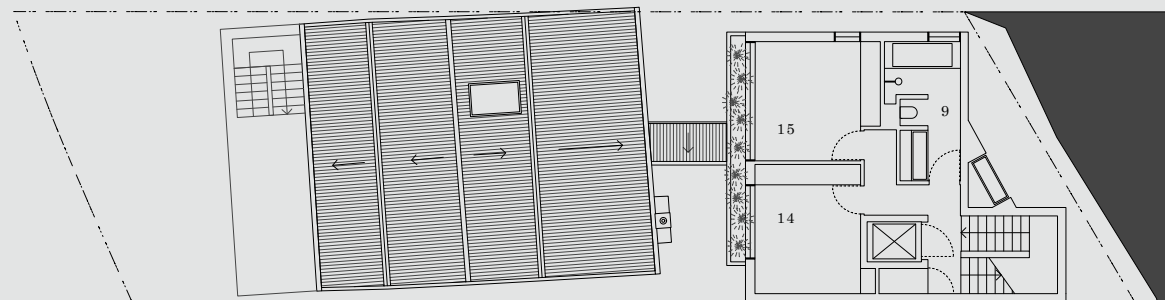
地下層平面圖 LOWER FLOOR PLAN



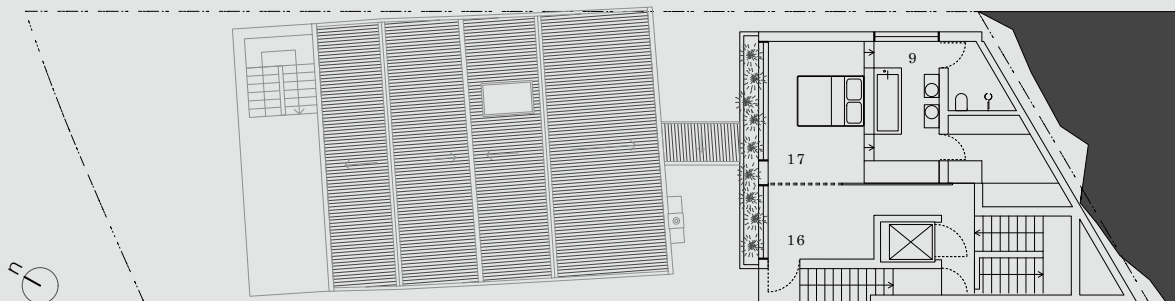
一樓平面圖 GROUND FLOOR PLAN



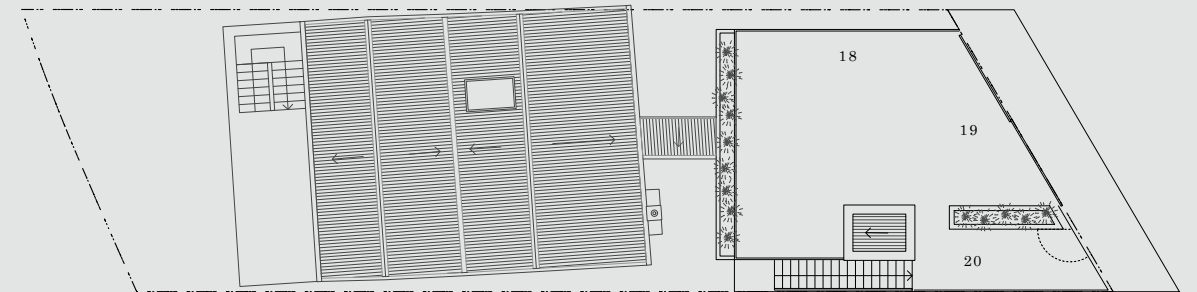
二樓平面圖 FIRST FLOOR PLAN



三樓平面圖 SECOND FLOOR PLAN



頂樓平面圖 ROOF PLAN



1 游泳池	8 臥室 1	15 臥室 3	1 Pool	8 Bedroom 1	15 Bedroom 3
2 衛生間	9 衛浴	16 玄關入口	2 Toilet	9 Bathroom	16 Entrance
3 淋浴間	10 衣帽間	17 主臥室	3 Shower	10 Coatroom	17 Master bedroom
4 客廳	11 洗衣間	18 停車棚	4 Living room	11 Laundry area	18 Carport
5 餐廳	12 地下室	19 停車場入口	5 Dining room	12 Cellar	19 Entry for cars
6 廚房	13 甲板	20 步行通道	6 Kitchen	13 Deck	20 Pedestrian access
7 書房	14 臥室 2		7 Study room	14 Bedroom 2	

空間性質 住宅 Character of Space Residence
 座落位置 澳洲雪梨 Location Sydney, Australia





past deep green velvet curtains,” says Eva-Marie. Restored and opened into a singular volume, the fisherman’s cottage presents an understated, open-plan room for living that slowly reveals the site’s striking harbour views. An impression of the cottage’s original walls is marked with a blackened steel framework – a spatial memory of the building’s first form.

The modestly sized living, dining and kitchen space open to a large deck for extended family gatherings, while the courtyard offers a protected outdoor respite for summer afternoons. An undercroft and small infinity edge pool are tucked beneath the cottage; a thoughtful gesture that visually extends the harbour back into the site. Throughout, Studio Prineas has flexibly designed the compact house to maximise functionality, enhance scale and accommodate the family’s changing needs. Bespoke, leather-clad sliding walls expand and contract spaces, while mirrored surfaces create an illusion of depth. Joinery is carefully considered to reduce clutter in the modestly scaled bedrooms, while in the main bedroom, a solid stone bath doubles as a bedhead, increasing the impression of space. Determined to add another layer of conservation and restoration to the site, Studio Prineas worked closely with Bushy Landscapes to research and source tube stock of flora indigenous to the site. Rehabilitate with hanging gardens across the building face, allowing nature to cover the tower and ‘reclaim’ the site over time.

Principal Designers
Eva-Marie Prineas
Photography
Gavin Green
Collator
Dana Chen



Built on the land of the Wangal and Birrabirrigal People of the Eora Nation and nestled on a steeply sloping site in Birchgrove, tumbling towards Sydney Harbour, Fisherman’s House connects a 19th century fisherman’s cottage with a new, off-form concrete tower; a richly layered home embedded in its site. From the outset, Studio Prineas saw an opportunity to retain and celebrate the original weatherboard fisherman’s cottage by introducing a contrasting architectural sensibility; an off- form concrete ‘tower’ that nestles against the sandstone cliff edge. Though one room deep in footprint, the tower accommodates the home’s private program of spaces, connected to the old cottage via a glazed courtyard link that “allows each structure to breathe,” says Eva-Marie.

From street level, only the lift overrun of the home’s off-form concrete tower is visible, fostering a quality of allure and mystery. “The verticality of the tower navigates the site’s dramatic drop and facilitates an experiential journey through the site,” explains Eva-Marie. In the calm stillness of the concrete mass, movement is guided through a moody stairwell finished with walnut timber veneer, glowing pendant lights and a bespoke, leather-wrapped handrail. A series of unexpected vistas and layered atmospheres are revealed as one descends the site, “from views to the dramatically up-lit sandstone cliff face, to tailored glimpses to the harbour,



ISSUE 15



ISSN 2790-0495



9 772790 049002



05

NT\$ 420