

AUSTRALIAN HOT HUES FOR THE GARDEN *plus* GREAT BUYS

# HOUSE & GARDEN

TOP 50 ROOMS REVEALED

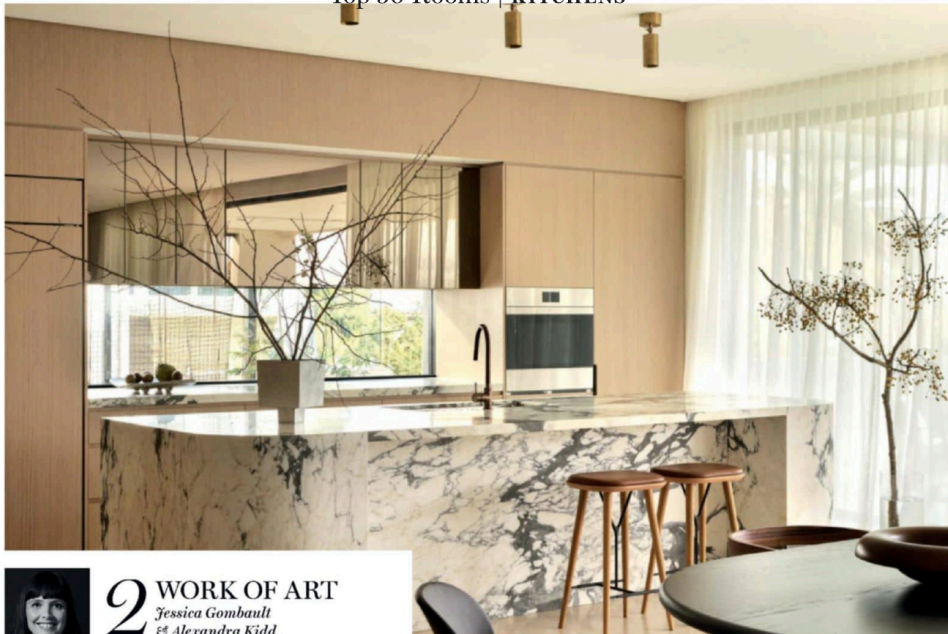
*Colour*  
CODED

STUNNING SPACES *from* SOFT AND  
PRETTY *to* BOLD AND BEAUTIFUL

*Bring a plate*  
TAPAS TO SHARE



Top 50 Rooms | KITCHENS



Words by Sue Ramsey and Bethan Lacoba. Styling by Jack Milenkovic (2), Claire Delmar (4). Photography by Prue Ruscoe (2), Anson Smart (3, 4).



## 2 WORK OF ART

Jessica Gombault  
& Alexandra Kidd,

ALEXANDRA KIDD INTERIOR DESIGN,  
POTTS POINT, NSW

The brief: serene and sophisticated. The result: “an open, airy space that is both a culinary haven and a stylish gathering spot,” says Jessica, who worked with architect Bevan Boss on this home. Warm timber veneer joinery provides seamless storage, while large windows and sliding doors flood the room with natural light. The owners say that their favourite feature is “the stunning marble island, which not only serves as a workspace but as a piece of art.” [alexandrakidd.com](http://alexandrakidd.com).



## 3 WELCOME HOME

Louise Walsh & Susannah Lang,  
LOUISE WALSH INTERIOR  
DESIGN, LENNOX HEAD, NSW

Keen entertainers, the owners wanted their kitchen to be a gathering place for friends and family. Louise, who worked with Nick Kent Design, strategised to obscure clutter yet keep the space open. “With pocket doors concealing the prep area and benchtop appliances hidden behind, the kitchen successfully allows the cook to be simultaneously catering for and engaged with their guests.” An undulating concrete ceiling draws the eye down to warm timber joinery, a striking natural stone splashback, then to a tactile zinc-wrapped island. [louisewalsh.com.au](http://louisewalsh.com.au).



## 4 SECRET SERVICE

Eva-Marie Prineas, STUDIO PRINEAS, RUSHCUTTERS BAY, NSW

The owners of this kitchen needed to accommodate a busy family of five at various life stages. It was to be elegant yet hardworking. A concealed service area meets the practicality brief with a butler's pantry/mudroom, laundry, cellar, linen press and powder room. Meanwhile, the aesthetic brief gets a huge tick, thanks to blush marble with burgundy veining, and bronze and brass accents. “These offer a subtle nod to the home's Federation origins, reinterpreted with a contemporary hand.” [studioprineas.com.au](http://studioprineas.com.au).

**ROOM NOTES** (2) Joinery in Evener Raw in Chinchilla, Elton Group. Island in Arabescato marble, Nefiko. Cylinder downlights, Apparatus. Mixer, Astra Walker. Franke sink, and Wolf ovens, all Winnings. Sculpture by Scott McNeil. (3) Walls painted Dulux Grey Pebble Half. Joinery in Evener Raw in Almond, Elton Group, and Laminex Graphite Pearl. Splashback in Patagonia granite, Worldstone. Kristalia stools, Fanuli. (4) Joinery in American White Oak veneer, Briggs Veneers. Benchtop and island in Tiberio marble, Artedomus. Tapware, Astra Walker. Pendant light, Archier.





Best Bedroom  
**WINNER**

SPONSORED BY

**Tongue  
& Groove**



**21 WARM EMBRACE**  
*Eva-Marie Prineas, STUDIO PRINEAS,  
RUSHCUTTERS BAY, NSW*

An artfully crafted pitched ceiling with a skylight welcoming in natural light is just one of the many appealing elements of this winning bedroom. A grounded palette of earthy tones, along with natural textures of linen, timber and wool, cocoons this parents' retreat. "The main suite was to form an elevated sanctuary for rest and relaxation, overlooking the expansive garden and district views," says Eva-Marie. [studioprineas.com.au](http://studioprineas.com.au).



**ROOM NOTES (21)** Joinery in American White Oak veneer, Briggs Veneers. Chair, Space, Nemo wall light, Cult. Bedcover, In Bed. Artwork by Claudia Greathead, Chalk Horse. Platter c/o Chris Connell, and Manetti stool, both Artedomus. Floors in 'Galet' carpet in Sienna, Bremworth. **(22)** Walls painted Dulux Natural White. Vintage table, Busatti bed linen and 'Lazio' linen curtains, Arteriors lamp, and vase by Elena Strohfeldt, all Kate Nixon Store. Rug, Cadrys. Floors in EC 'Andes Peak' carpet in Patilla.

Top 50 Rooms | **BEDROOMS**



**22 VINTAGE CLASS**  
*Kate Nixon, Jarrod Potaka  
& Nick Bryan-Brown,  
KATE NIXON, RUSHCUTTERS BAY, NSW*

Understated yet timeless, this elegant bedroom is layered with luxurious textures in the form of cashmere, wool and silk, while a neutral palette of ivories and creams is beautifully accented with warm rust velvet and weathered timber tones. An Italian handmade iron bed frame dressed in sheer linen and a vintage Spanish timber and iron bedside table add personality to this room in a historic terrace. Crisp white walls elevate the space to a contemporary setting. [katenixon.com](http://katenixon.com).



**23 SUBLIME WHITE**  
*Madeleine Blanchfield,  
MADELEINE BLANCHFIELD  
ARCHITECTS, PADDINGTON, NSW*

With a directive to create "a cohesive, serene, light-infused home within stringent heritage conditions", Madeleine ticked all the boxes with her work on this inner-city Sydney home, exemplified in this elegant main bedroom. Heritage elements, such as cornicing and French doors, have been reinstated and blend seamlessly with more contemporary finishes. There is no "jolt from old to new, but rather a holistic sense of time and space" in this home, says Madeleine, thanks largely to the soothing white and oak scheme. [madeleineblanchfield.com](http://madeleineblanchfield.com).



**ROOM NOTES (23)** Walls painted Dulux Antique White USA Quarter. Light, Nightworks. Bedcover, In Bed. Side table, Dimitri Vargas. Vase, Becker Minty. Bowl, Ventifact Studio. Floors in European oak in Bistre, Tongue & Groove.

Words by Bethan Lacob. Styling by Claire Delmar (21), Jack Milenkovic (23). Photography by Anson Smart (21), Maree Homer (22), Prue Ruscoe (23).



Top 50 Rooms | LAUNDRIES



**49** GORGEOUS GALLEY  
*Eva-Marie Prineas, STUDIO PRINEAS,*  
 RUSHCUTTERS BAY, NSW

"The laundry needed to be large enough for a family of five. Along with the kitchen it is one of the hardest working spaces in the home," says Eva-Marie of this galley-style laundry in a Californian bungalow on Sydney's Lower North Shore. The laundry's joinery backs onto the kitchen, with sliding doors at each end, which means it can be closed off from adjoining spaces. "The laundry was required to be practical, a space that was enjoyable to be in, easily accessed and an integral part of the workings of this home," says Eva-Marie. [studioprineas.com.au](http://studioprineas.com.au).



**50** SMART MOVE  
*Marylou Sobel, MARYLOU SOBEL,*  
 INTERIOR DESIGN,  
 WOOLLAHRA, NSW

A neutral palette coupled with a generous floorplan adds style and practicality to this chic room. The laundry was relocated to "create a larger, more functional space," says Marylou. A former rarely used guest bathroom made way for the new laundry, which now features plentiful storage (new joinery runs along both sides of the room), with room for tall baskets and larger items, as well as benchtop and hanging space. Grigio Orsola marble, bronze tapware and a mosaic splashback layer in style and texture. [marylousobel.com.au](http://marylousobel.com.au).

**ROOM NOTES (49)** Walls, bagged brickwork painted Dulux Vivid White. Joinery in Laminex Pumice, and Briggs Vener American White Oak. Schock Quadro sink in Onyx, Abey. Tapware in English Brass, Astra Walker. Polished concrete floors. **(50)** Walls painted Resene Double Rice Cake. Splashback in Botticino marble mosaic tiles, Bisanna. Benchtop, shelf and floor tiles in Grigio Orsola marble, Artedomus. Tapware, Brodware. Hardware, Noble Elements. Custom hanging rail, Savage Design.



Words by Karen Sprenger. Styling by Claire Delmar (49). Kirsten Staanwix (Bookalilli) (50). Photography by Anson Smart (49, 50).

**Electrolux**

**100 AUSTRALIA SINCE 1924**

**Swedish thinking. Better living.**

At the core of Electrolux lies the essence of Swedish thinking - simplicity, functionality, and sustainability. Improving your daily life with innovative solutions. With Electrolux, you get not only advanced technology in your kitchen but also support a greener, more sustainable future.

**Visit your nearest Winnings store today**  
 Sydney | Melbourne | Brisbane | Canberra | Perth

**Winnings**  
 WELCOME HOME

Scan the QR code to learn more about Electrolux.